

# Sigma Towers 1 & 2

## Dear Investors,

We are delighted to convey to you the 2015 second quarter project update covering the construction activities Performed in Sigma 1 & 2 Towers.

During our recent site visit to Sigma Towers, we have seen significant progress being made in several key areas of the towers development which are outlined below

### FAÇADE

In this project update we are very glad to note the progress taking place in this particular area as detailed below:

- Crown Façade installation is 100% completed for both Towers
- Balcony aluminum cladding panels (ACP) installation works are in progress reaching to level 33 in both Towers
- Podium Utilized Curtain Wall (UCW) installation is in progress reaching to level 04 in Sigma 1 Tower
- Mashrabia panels installation is in progress reaching to level 07 in both Towers



Sigma 1 Façade work



Sigma 2 Façade work

### ARCHITECTURAL WORKS

In this stage of the project, the main focus of the Master Developer is to ensure that all architectural works are progressing actively, and we are happy to note that many architectural activities are in their latest stages as mentioned in the below lines:

- Tiling works are 100% completed
- Stone/Marble materials are 100% delivered to site
- Door installation is 98% completed
- Internal painting works are 95% completed
- Kitchen cabinet carcasses are 100% delivered and installed
- Wardrobe carcasses material is 100% delivered and installed
- Shutters for wardrobes are 100% delivered, while 98% are installed
- Gypsum ceiling works are 100% completed except for ground level
- Installation of handrails including wall mounted works is 100% completed

### LANDSCAPING & SWIMMING POOLS

We are pleased to report that the landscaping works have reached 95% completion including the precast coping at podium level. Also, the master developer has handed over the Kerb stone fixing & paving tiles road works to M/s GDL, and both parties are keen to ensure that work in this particular area is progressing as per the agreed schedule.

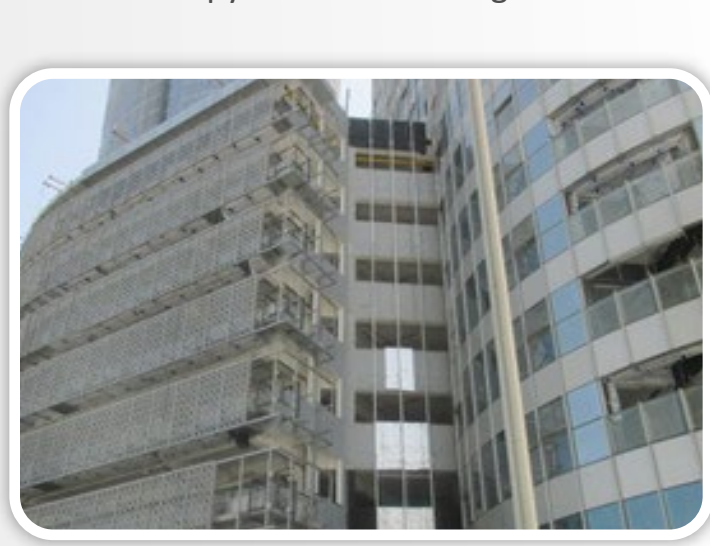
As for the swimming pools, the specialist architect has confirmed that the mosaic tiles installation is 100% completed at the Towers podium swimming pools, while the coping stone works are 98% completed; furthermore, the swimming pools changing room tiling works are 100% completed.



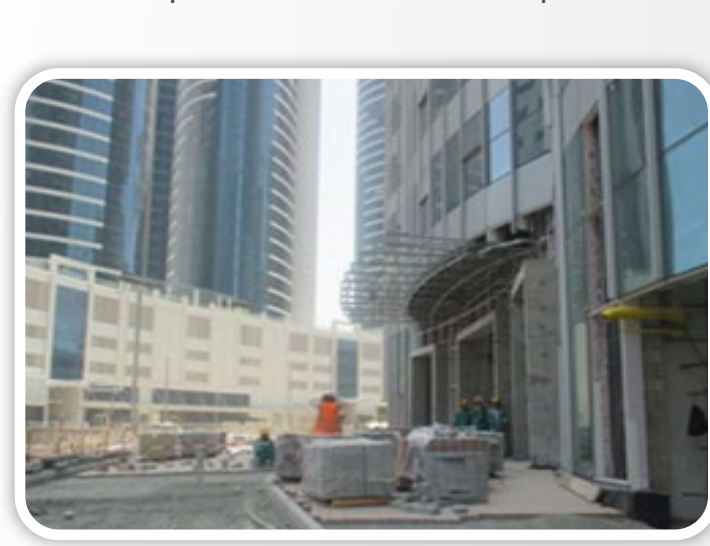
Canopy installation at Sigma 2



Mashrabia panel & ACP installation podium levels



ACP cladding works at Podium Level Façade



Ground level paving and Canopy installation at Sigma 1



Bedroom at Sigma 1 (Mockup unit)



Kitchen at Sigma 1 (Mock up unit)

### MECHANICAL, ELECTRICAL & PLUMBING (MEP)

In this stage of the project, the Master Developer is working within the authorities' regulations & requirements to ensure that all inspections are up and running successfully, including ADDC water preliminary inspection, ADM water supply and ADM Engineer visit. Also, third party analysis report for chilled water quality was submitted and approved from PAL.

On the other hand, we are glad to report that majority of MEP equipments and works are progressing steadily as per the following:

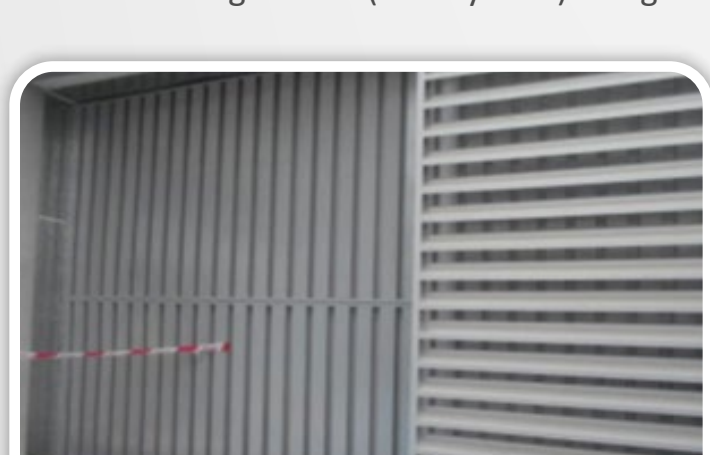
- Final fix MEP works are 100% completed
- Testing and commissioning are on-going at both Towers
- Life safety fans & car park fans testing & balancing is in progress
- 22KV cable laying works are 100% completed
- Sanitary ware installation works are in progress
- Pressure testing for SNG systems are in progress
- Firefighting sprinklers installation is 100% completed for all levels at both Towers



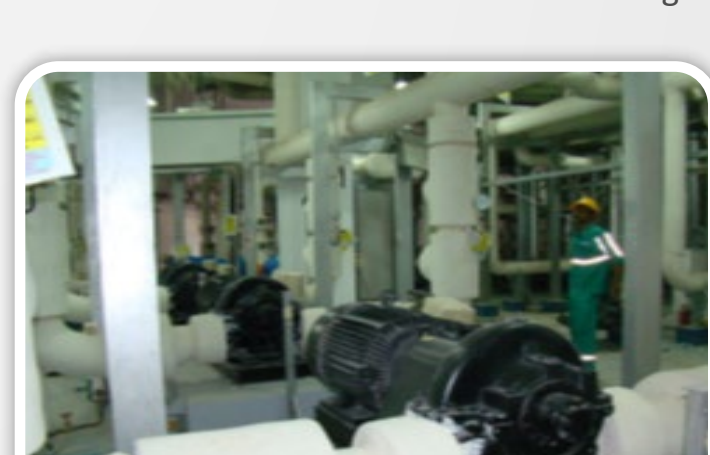
Pressure reducing station (SNG system) at Sigma 2



DMS Panel Installation and termination at Sigma 1



Sand trap louver at Sigma 2



Chilled water flushing works

We hope this project update has been informative; there are many activities taking place within the Project and we will share more details with you in our next update which is due for release in early October 2015. In the meantime, we welcome your comments and continued support for our projects and please feel free to visit our offices or contact us via any of the methods shown below.

Best regards from,  
The Customer Service Team  
Mismak Properties LLC

**MISMAK**  
PROPERTIES



Tel: +971 2 635 4444  
Fax: +971 2 635 4995



customercare@mismak.ae



www.mismak.ae

#### Disclaimer:

The data contained herein are only estimated and such data and images are subject to further modification and change without any notice.